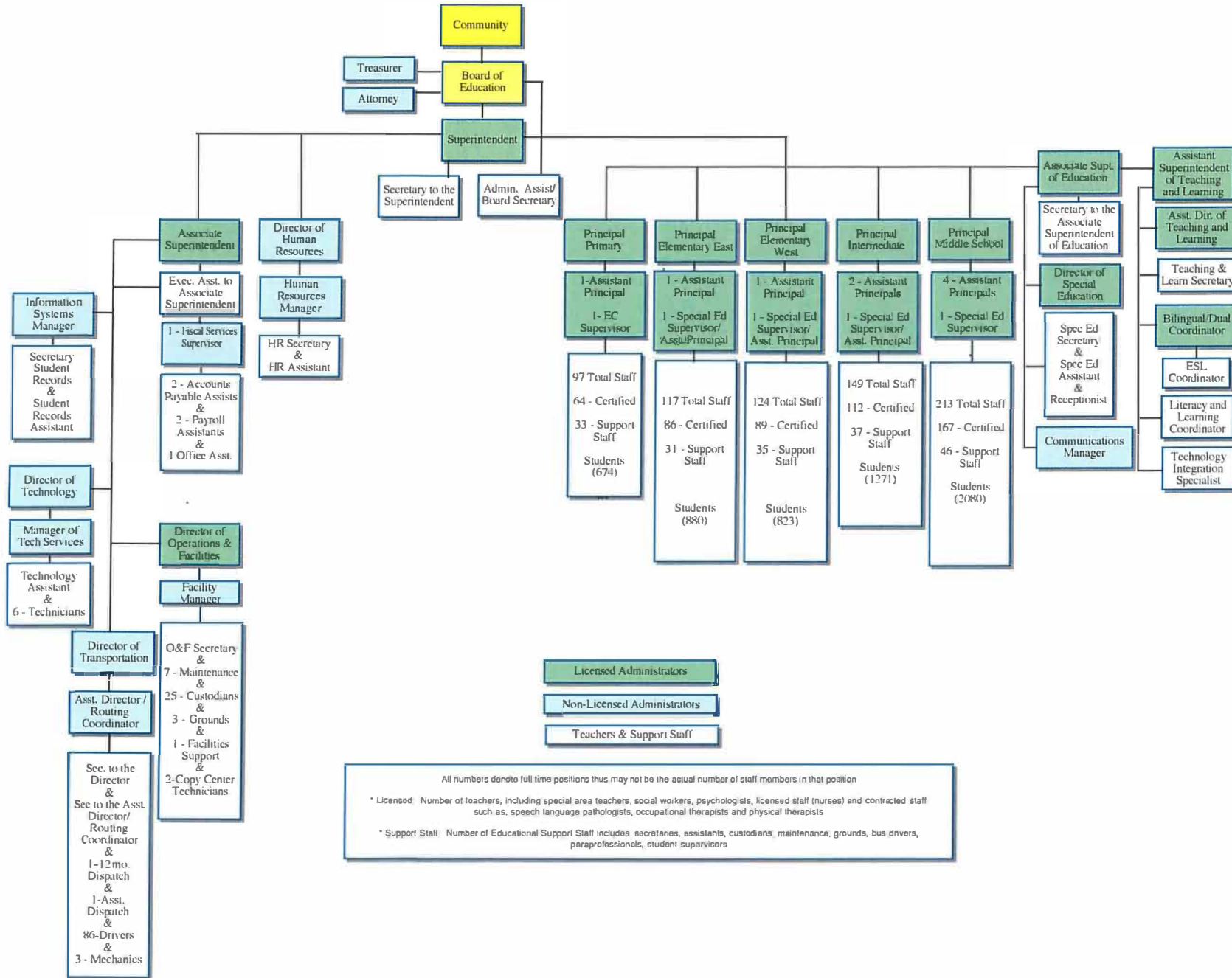


General School Administration

Exhibit - Organizational Chart for Administration

See below:



- Licensed Administrators**
- Non-Licensed Administrators**
- Teachers & Support Staff**

All numbers denote full time positions thus may not be the actual number of staff members in that position

* Licensed: Number of teachers, including special area teachers, social workers, psychologists, licensed staff (nurses) and contracted staff such as, speech language pathologists, occupational therapists and physical therapists

* Support Staff: Number of Educational Support Staff includes secretaries, assistants, custodians, maintenance, grounds, bus drivers, paraprofessionals, student supervisors